

DEKAL NINE ARRIVAL

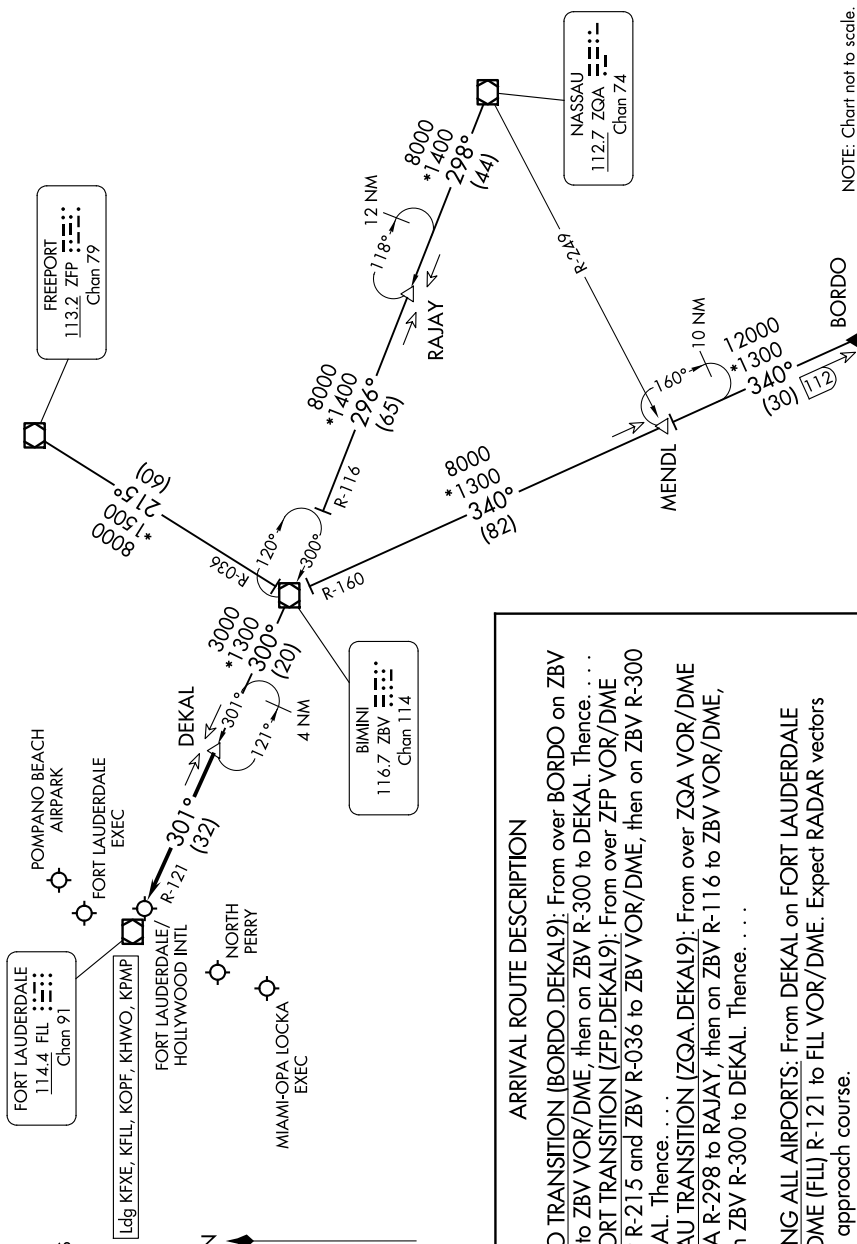
FORT LAUDERDALE, FLORIDA

SE-3, 16 APR 2026 to 14 MAY 2026

MIAMI APP CON
126.85 290.325
FILL D-ATIS
135.0
FXE ATIS
119.85
HWO ATIS
135.475
OPF ATIS
125.9
PMP ATIS
120.55

DEKAL NINE ARRIVAL
(DEKAL.DEKAL9) 26DEC24

RADAR required. DME required.



NOTE: Chart not to scale.

SE-3, 16 APR 2026 to 14 MAY 2026

ARRIVAL ROUTE DESCRIPTION

BORDO TRANSITION (BORDO.DEKAL9): From over BORDO on ZBV R-160 to ZBV VOR/DME, then on ZBV R-300 to DEKAL. Thence. . . .
 FREEPORT TRANSITION (ZFP.DEKAL9): From over ZFP VOR/DME on ZFP R-215 and ZBV R-036 to ZBV VOR/DME, then on ZBV R-300 to DEKAL. Thence. . . .
 NASSAU TRANSITION (ZQA.DEKAL9): From over ZQA VOR/DME on ZQA R-298 to RAJAY, then on ZBV R-116 to ZBV VOR/DME, then on ZBV R-300 to DEKAL. Thence. . . .

LANDING ALL AIRPORTS: From DEKAL on FORT LAUDERDALE VOR/DME (FLI) R-121 to FLI VOR/DME. Expect RADAR vectors to final approach course.

FORT LAUDERDALE, FLORIDA